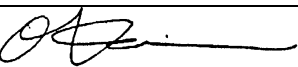




SERVICE BULLETIN

PUBLICATION GROUP, AFTER SALES SERVICE DEP.
MITSUBISHI MOTOR SALES EUROPE BV

SERVICE BULLETIN		No.: ESB-97E13-506		
		Date: 1998-03-31	<Model>	<M/Y>
Subject:	CORRECTION TO TIGHTENING TORQUES OF FUEL TANK BAND NUTS	(EC,EXP)		97-10
Group:	FUEL	CARISMA		
CORRECTION	<div> O. Kai - E.V.P. & G.M. After Sales Service Dept.</div>			

1. Description:

This Service Bulletin informs you of correction to tightening torques of the fuel tank band nuts.

2. Applicable Manuals:

Manual	Pub. No.	Language	Page(s)
'96 CARISMA Workshop Manual chassis	PWDE9502	(English)	13F-2, 3
	PWDS9503	(Spanish)	
	PWDF9504	(French)	
	PWDG9505	(German)	
	PWDD9506	(Dutch)	
	PWDW9507	(Swedish)	
	PWDI96E1	(Italian)	
'97 CARISMA Workshop Manual chassis	PWDE9502-A	(English)	13F-1, 2
	PWDS9503-A	(Spanish)	
	PWDF9504-A	(French)	
	PWDG9505-A	(German)	
	PWDD9506-A	(Dutch)	
	PWDW9507A-	(Swedish)	
	PWDI96E1-A	(Italian)	
'98 CARISMA GDI Workshop Manual chassis	PWDE9502-C	(English)	13F-1
	PWDS9503-C	(Spanish)	
	PWDF9504-C	(French)	
	PWDG9505-C	(German)	
	PWDD9506-C	(Dutch)	
	PWDW9507-C	(Swedish)	
	PWDI96E1-C	(Italian)	

3. Details:

EUR '96 CARISMA Workshop Manual Chassis, page 2, 3
EUR '97 CARISMA Workshop Manual Chassis, page 4, 5
EUR '98 CARISMA Workshop Manual Chassis, page 6

FUEL TANK

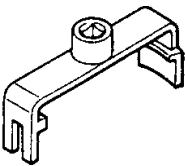
13500010038

GENERAL INFORMATION

- (1) The fuel tank is located under the floor of the rear seats to provide increased safety and a wider luggage space.
- (2) A fuel cut-off valve has been adopted to prevent fuel from leaking out in the event of a collision.
- (3) A plastic fuel tank has been adopted to reduce weight, and improve anti-corrosion effectiveness.

SPECIAL TOOL

13500060026

Tool	Number	Name	Use
	MB996009	Tank cap wrench	Installation of tank cap

<Added>

SEALANTS

Items	Specified sealant	Remarks
Fuel tank	Loctite 222 or 242 or equivalent	—

FUEL TANK

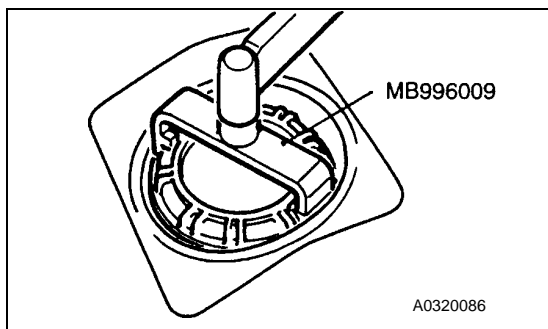
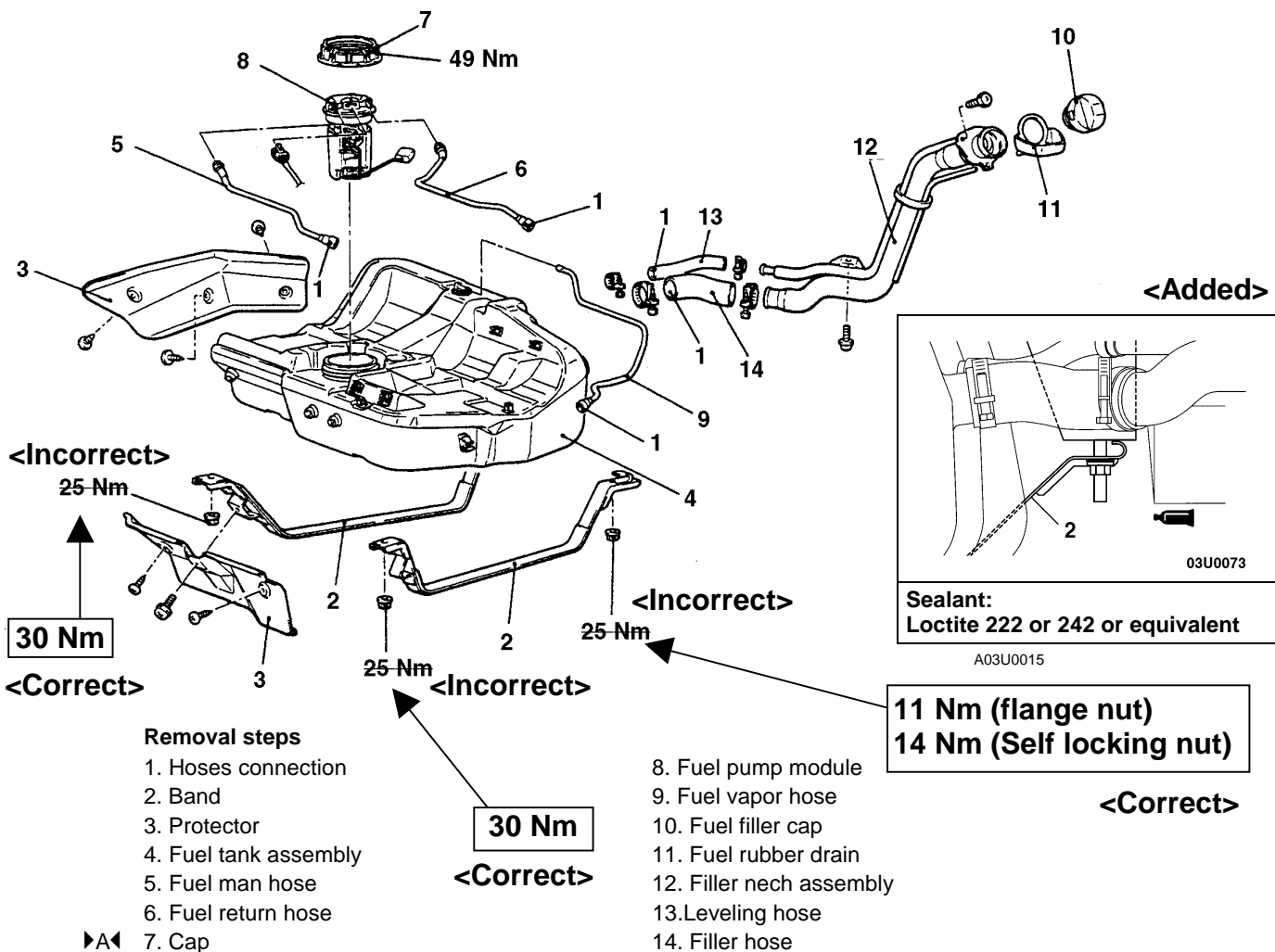
REMOVAL AND INSTALLATION

Pre-removal Operation

- (1) Draining the Fuel
- (2) Reduce the Inner Pressure of Fuel Line and Hose
(Refer to GROUP 13A - On-vehicle Service.)
- (3) Removal of the Center Exhaust Pipe
(Refer to GROUP 15.)

Post-installation Operation

- (1) Installation of Exhaust Pipe (Refer to GROUP 15.)
- (2) Refilling the Fuel
- (3) Checking for Fuel Leaks



INSTALLATION SERVICE POINT

▶ A ◀ CAP INSTALLATION

GROUP 13F

FUEL SUPPLY

GENERAL

OUTLINE OF CHANGES

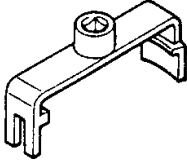
- The following service procedures have been added to the addition of the diesel-powered vehicle.

Applicable models: 1900D

- Removal and installation of the fuel tank
- Removal and installation of the fuel filter

FUEL TANK

SPECIAL TOOL

Tool	Number	Name	Use
	MB996009	Tank cap wrench	Installation of tank cap

<Added>

SEALANTS

Items	Specified sealant	Remarks
Fuel tank	Loctite 222 or 242 or equivalent	—

FUEL TANK

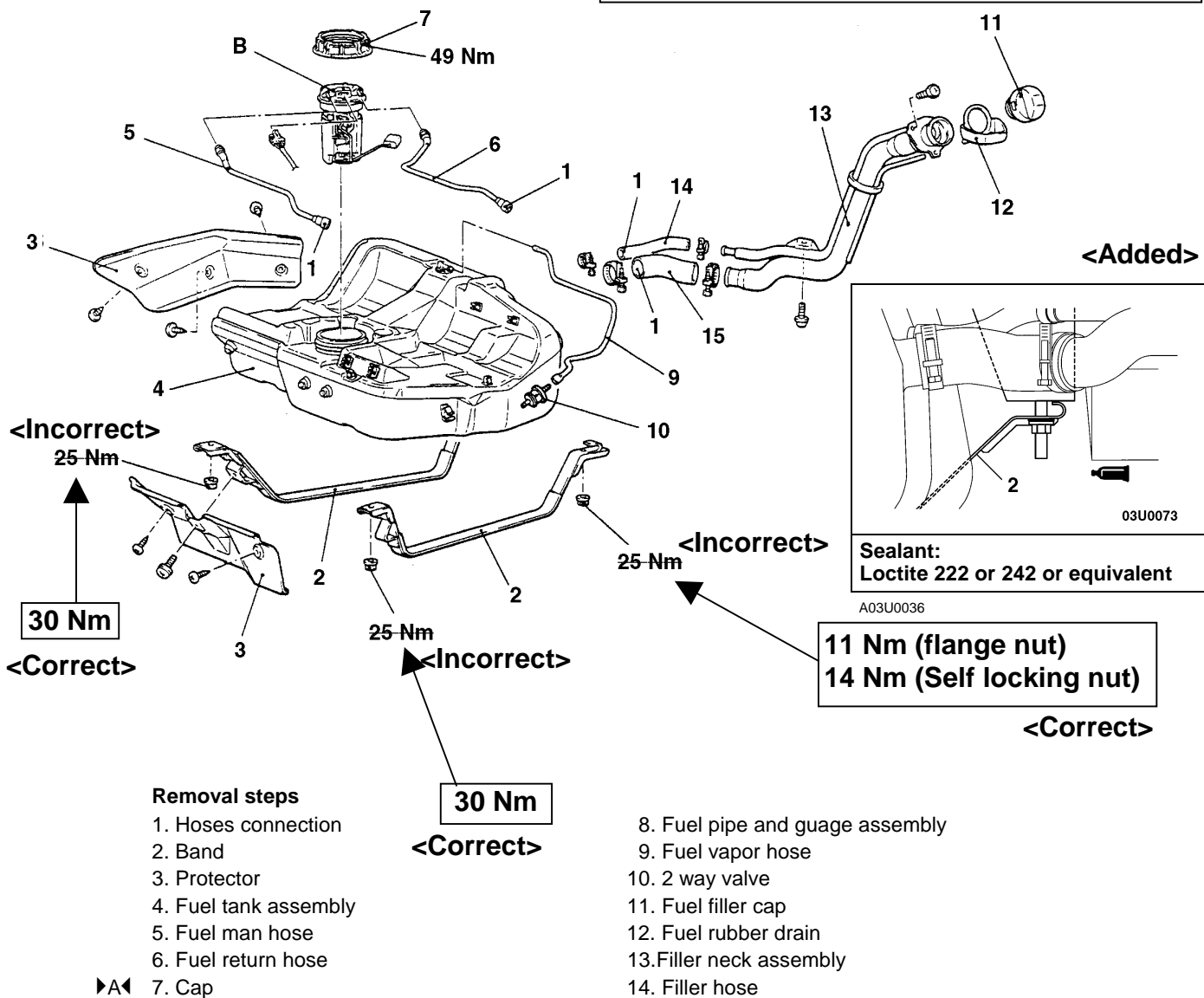
REMOVAL AND INSTALLATION

Pre-removal Operation

- (1) Draining the Fuel
- (2) Removal of the Centre Exhaust Pipe

Post-installation Operation

- (1) Installation of Exhaust Pipe
- (2) Refilling the Fuel
- (3) Checking for Fuel Leaks



GROUP 13F FUEL SUPPLY

GENERAL

OUTLINE OF CHANGES

- Maintenance service procedures have been established for items which are different from before to correspond to the following changes.

- Removal and installation of the fuel tank
- Removal and installation of the fuel filler

FUEL TANK

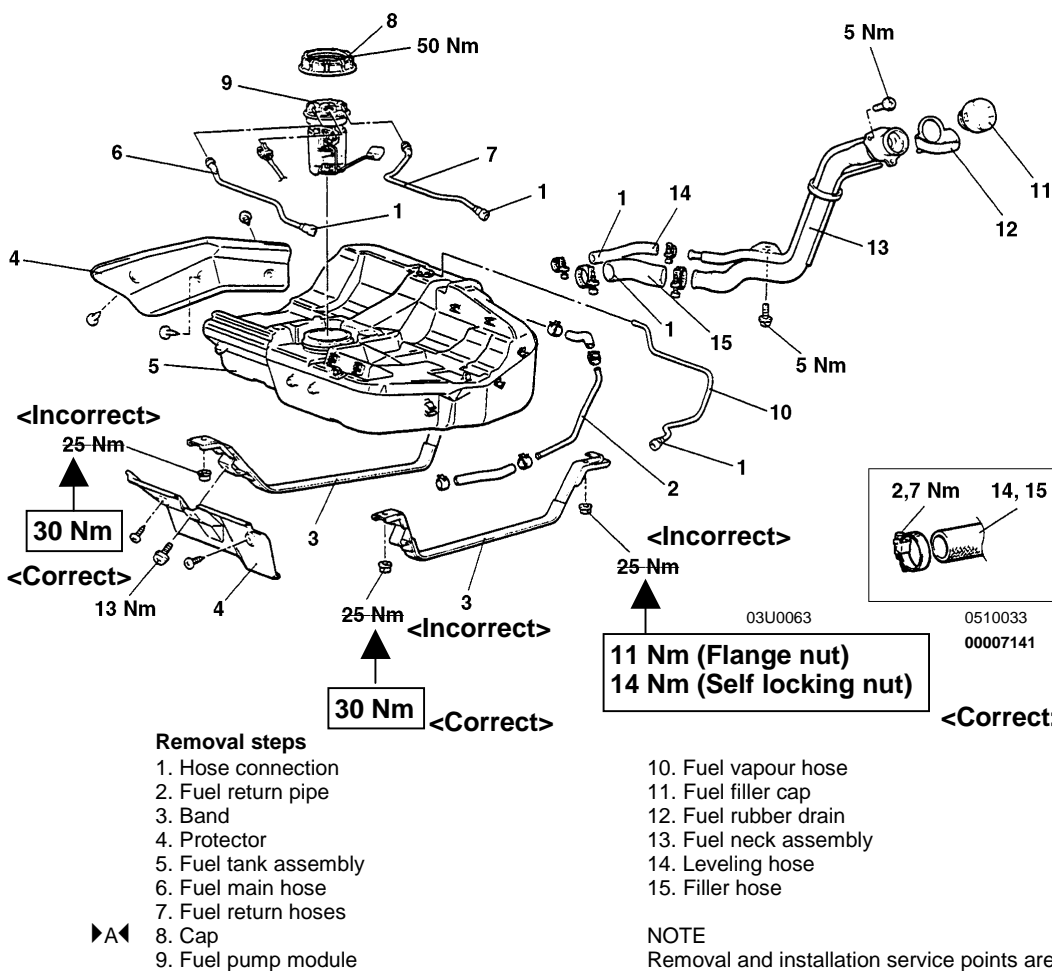
REMOVAL AND INSTALLATION

Pre-removal Operation

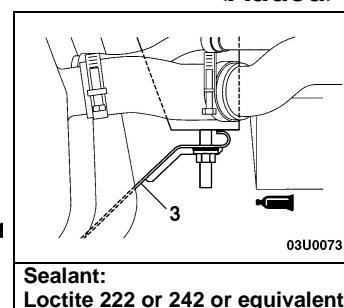
- Draining the Fuel
- Reduce the Inner Pressure of Fuel Line and Hose (Refer to GROUP 13A - On-vehicle Service.)
- Removal of the Center Exhaust Pipe (Refer to GROUP 15.)

Post-installation Operation

- Installation of Exhaust Pipe (Refer to GROUP 15.)
- Refilling the Fuel
- Checking for Fuel Leaks



<Added>



SEALANTS

Items	Specified sealant	Remarks
Fuel tank	Loctite 222 or 242 or equivalent	—